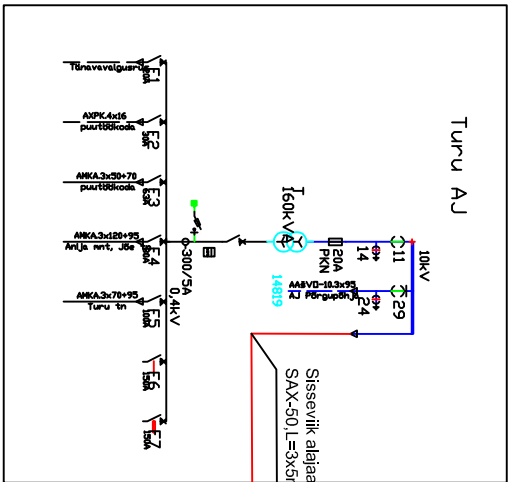
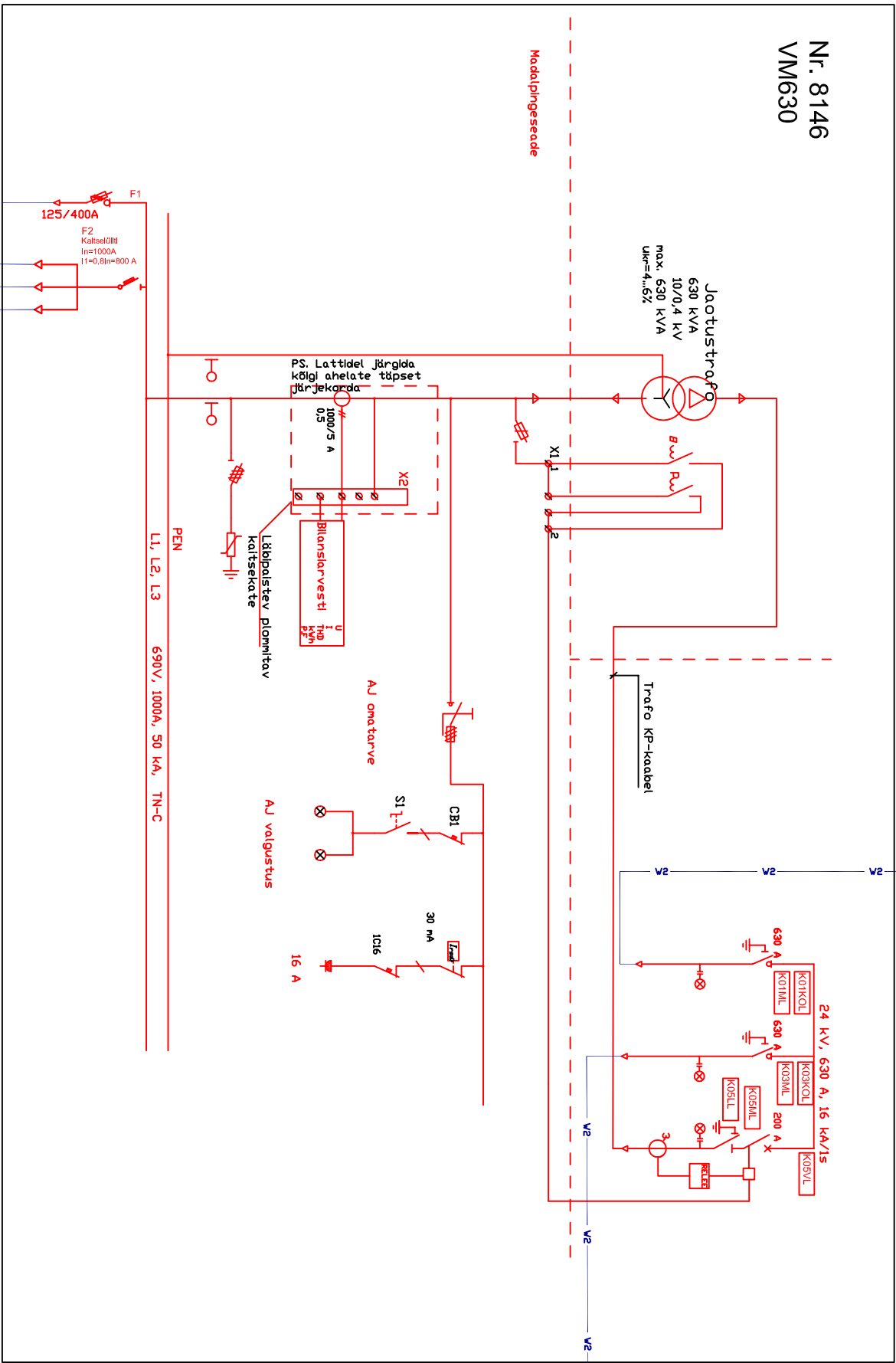
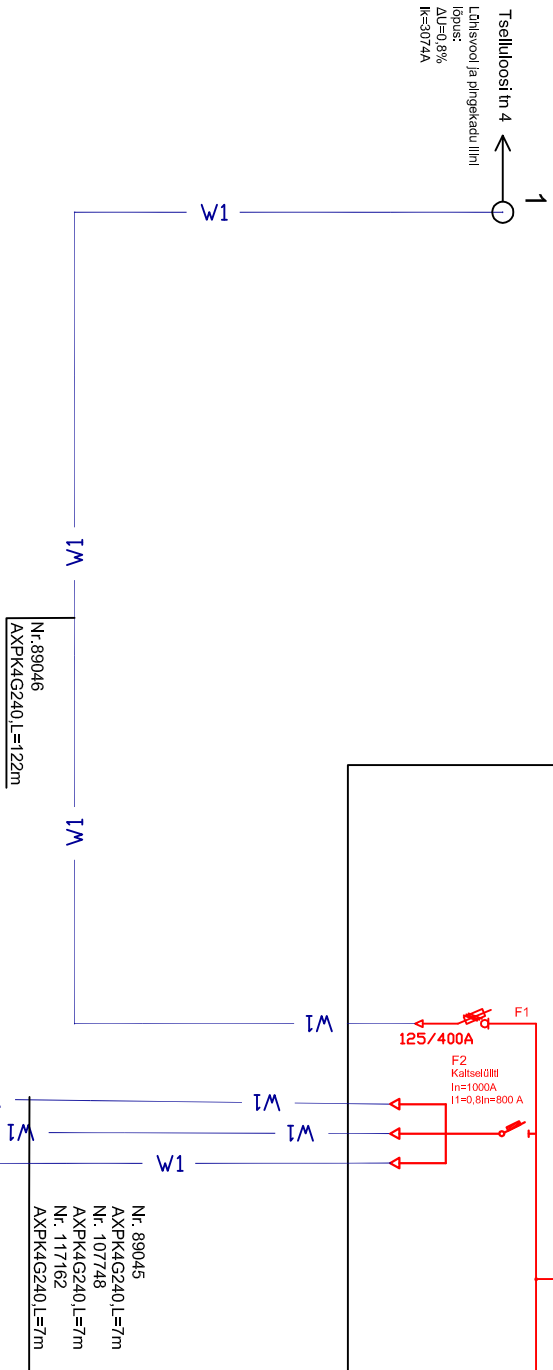


Nr. 89034
Jookkaabel 3x240+35L=447m
Nõrgepinge

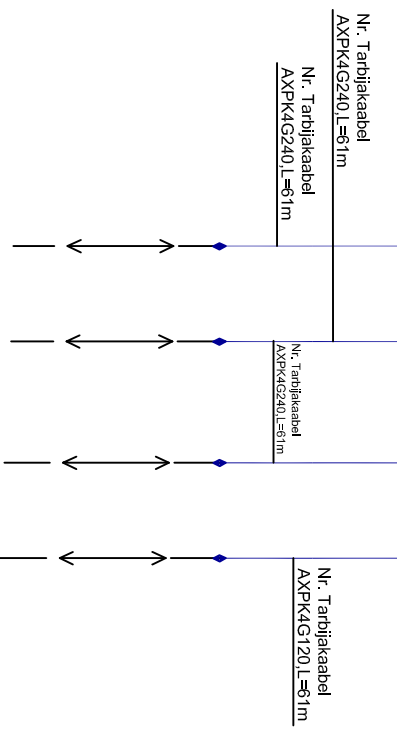
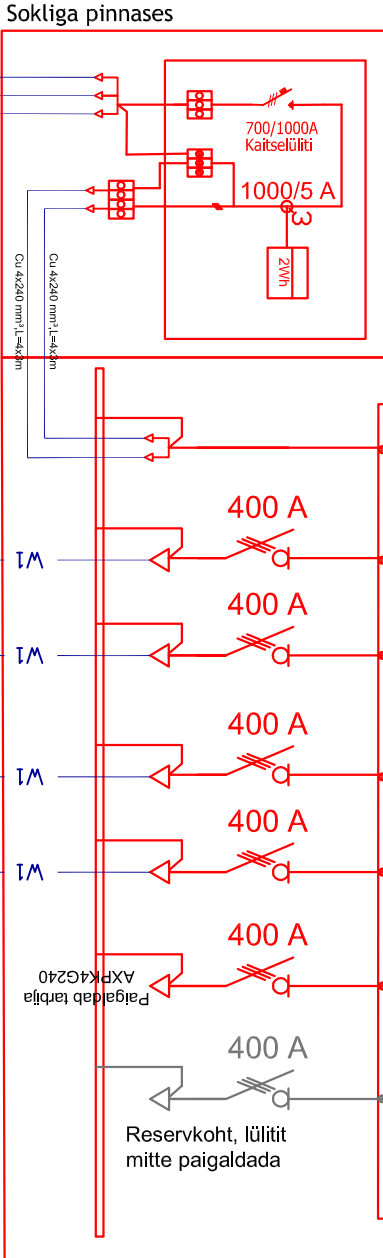


Tingimärgid

- Projekteeritud jätkumühv
- Olemasolev KP kaabel
- Projekteeritud KP kaabel
- Projekteeritud MP kaabel
- Projekteeritud seadmed
- Ettenähtud reservkoht, lülitit ei paigaldada



$I_k = 12750 \text{ A}$
149484LK (Tselluloosi in 2) 48123JK (Tselluloosi in 2)



Projekt				Tähtsus			
Keitra-Pellu II 10 kV liidri rekonstrueerimine, Keitra, Anija vald, Harjumaa				Elektrifilevi OÜ			
Leonhard Weiss				IP3037-2-3			
ENERGY AS							
Projektants				53428415			
Kontrollis				53428415			
Projektsuun				EST			
E-post: energy@leonhard-weiss.com							
Telefon: +372 715 4100							
Registreeritud: 10665798							